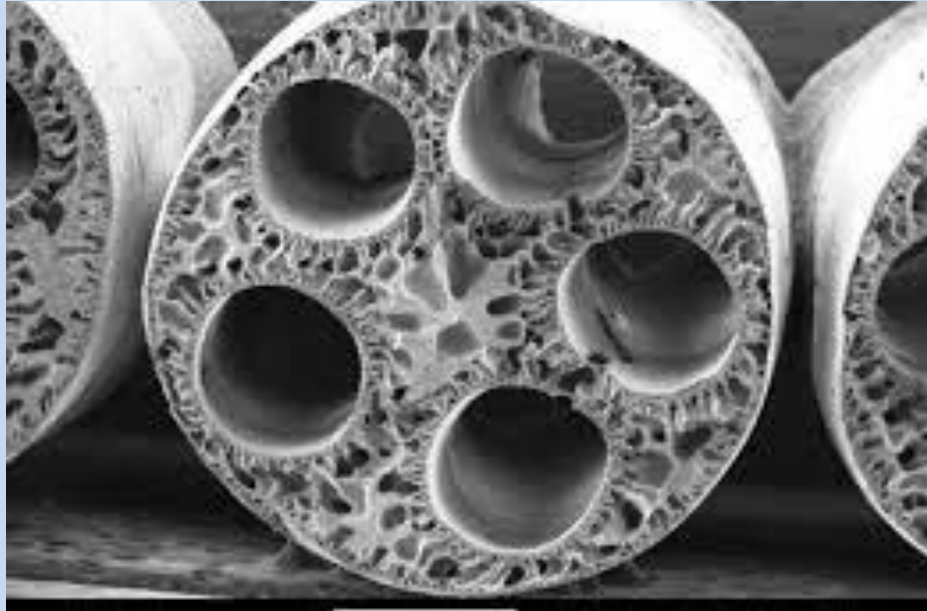
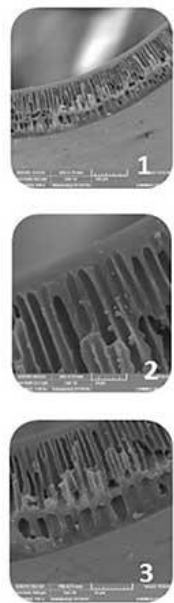
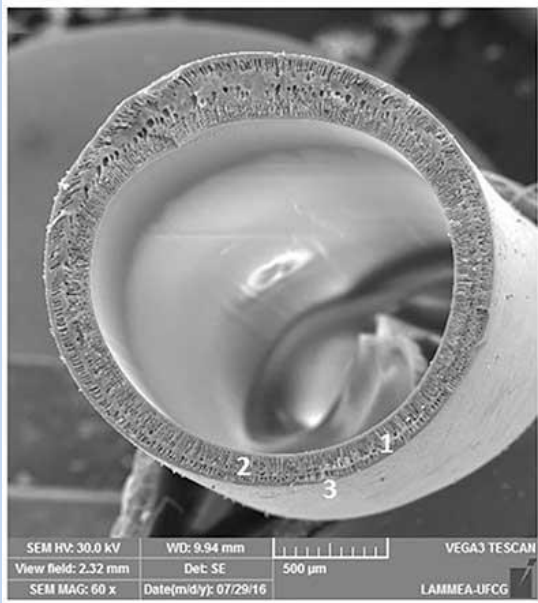


# Ultraflux



# HOLLOW FIBER MEMBRANES

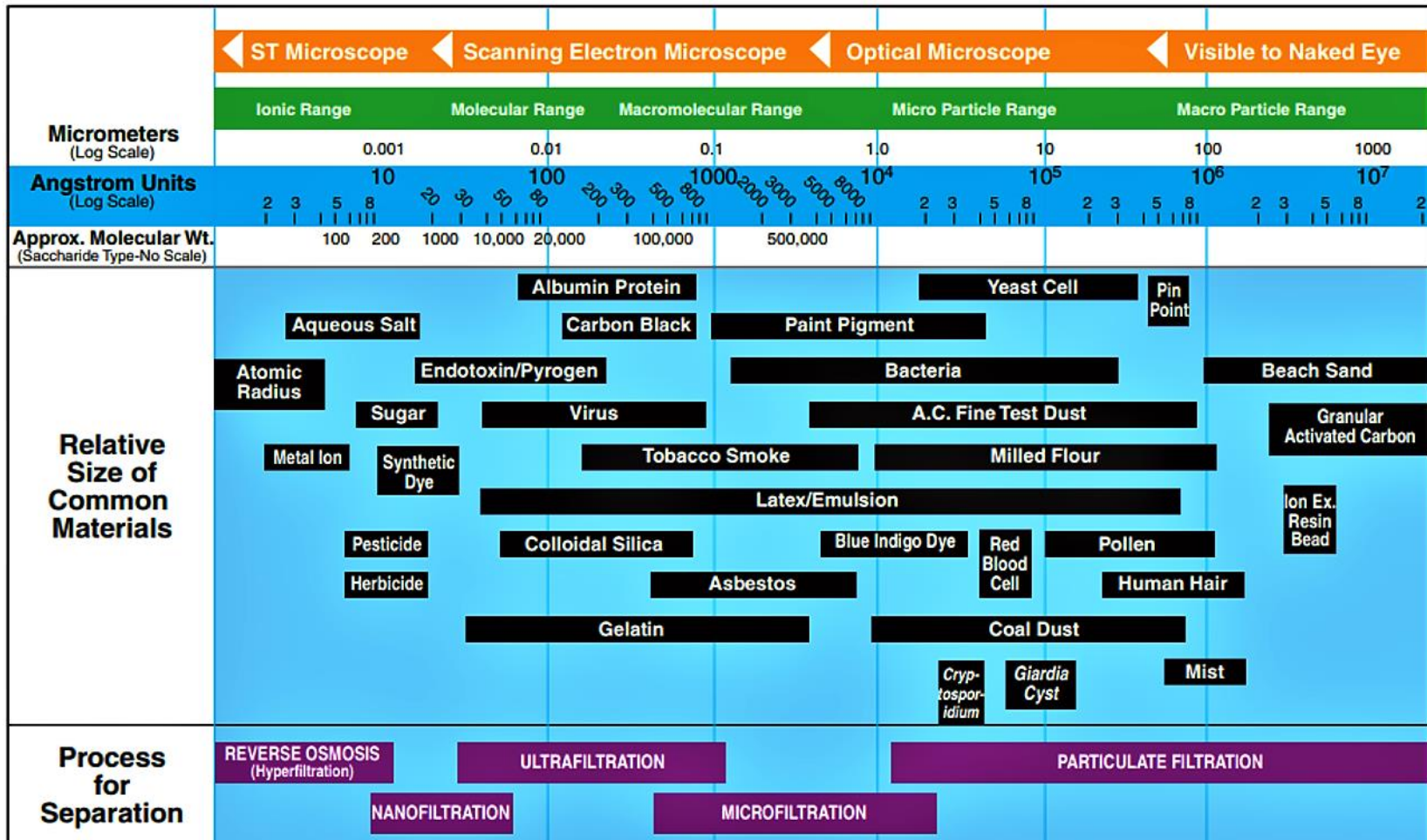


SINGLE BORE

MAXIBORE

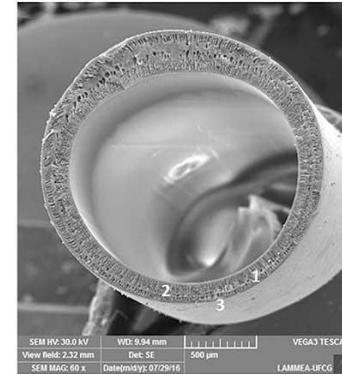
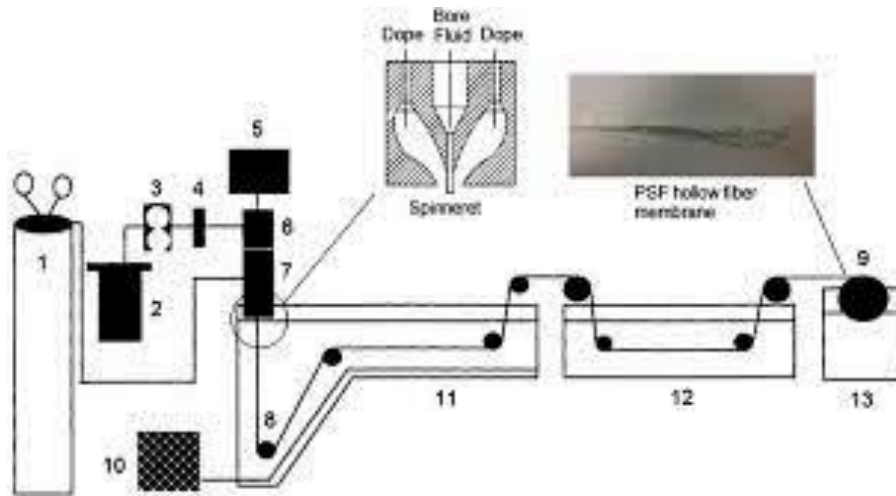
# FILTRATION SPECTRUM

MADE IN INDIA



# TECHNICAL DETAILS

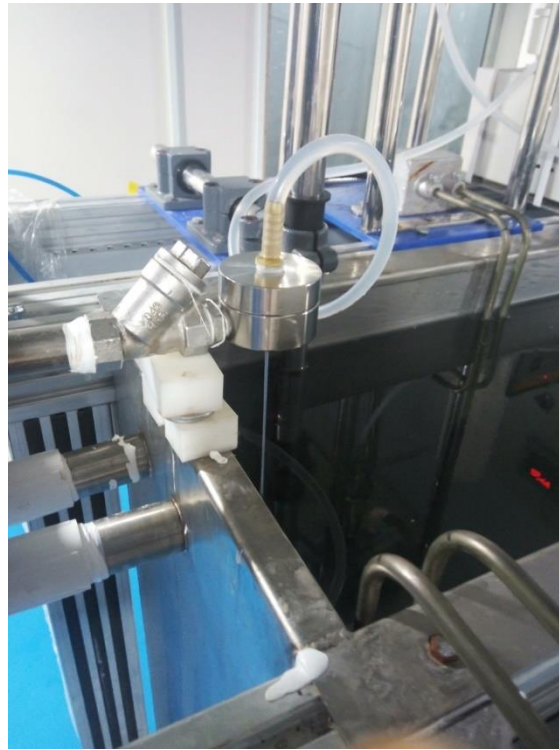
MADE IN INDIA



- TECHNOLOGY: WET SPINNING PHASE INVERSION
- POLYMER: PAN/POLYSULPHONE/PES/PVDF
- TYPE: HOLLOW FIBER
- MWCO: 50/30/5 KD FOR UF & 0.23 MICRONS FOR MF

# SPINNING MACHINE

MADE IN INDIA



# MEHF 2012



## Ultraflux

### MEHF 2012

#### MODULE SPECIFICATIONS

#### MATERIALS OF CONSTRUCTION

- 1) Housing : ABS
- 2) Potting : Epoxy

#### Membrane Specifications

- Polymer: Polysulphone Modified
- Flux: 70-150 LMH
- Pore Size: 0.01 Microns for UF & 0.23 Microns for MF
- MWCO: 100kD for UF
- Type: Cross Flow In-Out

#### CONNECTION SPECIFICATIOS

- Feed Side and Reject: 1/8 Standard RO
- Permeate Connections: 1/8 Standard RO



Module Type	Membrane diameter (mm)	Membrane area (m <sup>2</sup> )	Feed Connection (inch)	Module length (mm)	Module diameter (mm)	Permeate connection (inch)
ME HF 2012	0.8	0.3	1/8 Standard RO	305	50	1/8 Standard RO

# MEHF 2020BB



## Ultraflux

### MEHF 2020BB

#### MODULE SPECIFICATIONS

#### MATERIALS OF CONSTRUCTION

- 1) Housing : ABS
- 2) Potting : Epoxy

#### Membrane Specifications

- Polymer: Polysulphoe Modified
- Flux: 70-150 LMH
- Pore Size: 0.01 Microns for UF & 0.23 Microns for MF
- MWCO: 100kD for UF
- Type: Cross Flow In-Out

#### CONNECTION SPECIFICATIOS

- Feed Side and Reject: BB Standard Housing 20
- Permeate Connections: BB Standard Housing 20



# Open & Clean  
# High Strength  
#High Flow

Module Type	Membrane diameter (mm)	Membrane area (m <sup>2</sup> )	Feed Connection (inch)	Module length (mm)	Module diameter (mm)	Permeate connection (inch)
MEHF 2020BB	0.8	3.0	BB Standard Housing 20"	508	50	BB Standard Housing 20

# MEHF4020



## Ultraflux

## MEHF 4020

### MODULE SPECIFICATION

### MATERIALS OF CONSTRUCTION

- 1) Housing : ABS
- 2) Potting Epoxy

### Membrane Specifications

- Polymer: Polysulphone Modified
- Flux: 70-150 LMH
- Pore Size: 0.01 Microns for UF & 0.23 Microns for MF
- MWCO: 100kD for UF
- Type: Cross Flow In-Out

### CONNECTION SPECIFICATIO S

- Feed Side and Reject: 1" ( 25.4mm) PVC Solvent Cemented
- Permeate Connections: 1"( 25.4mm) PVC Solvent Cemented



Module Type	Membrane diameter (mm)	Membrane area (m <sup>2</sup> )	Feed Connection (inch)	Module length (mm)	Module diameter (mm)	Permeate connection (inch)
MEHF 4020	1.0mm	2	1"	500	90	1"



# MEHF 4040



Ultraflux

## MEHF 4040

### MODULE SPECIFICATIONS

#### MATERIALS OF CONSTRUCTION

- 1) Housing : ABS
- 2) Potting : Epoxy

#### Membrane Specifications

- Polymer: Polysulphone Modified
- Flux: 70-150 LM
- Pore Size: 0.01 Microns for UF & 0.23 Microns for MF
- MWCO: 100kD for UF
- Type: Cross Flow In-Out

#### CONNECTION SPECIFICATIO S

- Feed Side and Reject: 1" ( 25.4mm) PVC Solvent Cemented
- Permeate Connections: 1"( 25.4mm) PVC Solvent Cemented



Module Type	Membrane diameter (mm)	Membrane area (m <sup>2</sup> )	Feed Connection (inch)	Module length (mm)	Module diameter (mm)	Permeate connection (inch)
MEHF 4040	1.0	3-4	1"	1000	90	1"

# MEHF 7040/7060



## Ultraflux

## MEHF 7040/7060

### MODULE SPECIFICATIONS

#### MATERIALS OF CONSTRUCTION

- 1) Housing : ABS
- 2) Potting : Epoxy
- 3) End Caps : SS 304/316

#### Membrane Specifications

- Polymer: Polysulphone Modified
- Flux: 70-150 LM
- Pore Size: 0.01 Microns for UF & 0.23 Microns for MF
- MWCO: 100kD for UF/ 0.23 Microns for MF
- Type: Cross Flow In-Out

#### CONNECTION SPECIFICATIOS

- Feed Side and Reject: 2" ( 50mm) SS
- Permeate Connections: 2" ( 50mm) SS



Module Type	Membrane diameter (mm)	Membrane area (m <sup>2</sup> )	Feed Connection (inch)	Module length (mm)	Module diameter (mm)	Permeate connection (inch)
MEHF 7040	1.0	20-22	2"	1000	150	2"
MEHF 7060	1.0	28-30	2"		150	2"

# MEHF 8040/8060



## Ultraflux

### MEHF 8040/8060

#### MODULE SPECIFICATIONS

#### MATERIALS OF CONSTRUCTION

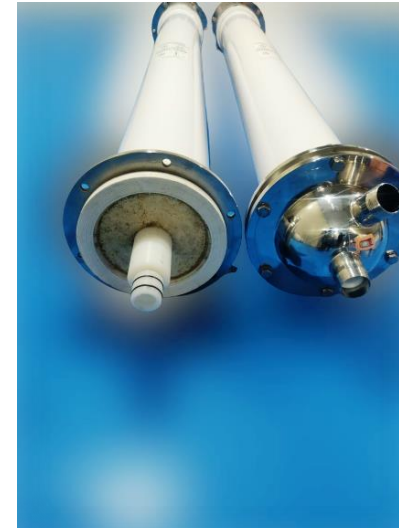
- 1) PIPE : UPVC
- 2) Potting : Epoxy
- 3) End Caps : SS 304/316

#### Membrane Specifications

- Polymer: Polysulphone Modified
- Flux: 70-150 LM
- Pore Size: 0.01 Microns for UF & 0.23 Microns for MF
- MWCO: 100kD for UF/ 0.23 Microns for MF
- Type: Cross Flow In-Out

#### CONNECTION SPECIFICATIOS

- Feed Side and Reject: 2" ( 50mm) SS
- Permeate Connections: 2" ( 50mm) SS



Module Type	Membrane diameter (mm)	Membrane area (m <sup>2</sup> )	Feed Connection (inch)	Module length (mm)	Module diameter (mm)	Permeate connection (inch)
MEHF 8040	1.0	25-27	2"	1016	200	2"
MEHF 8060	1.0	32-35	2"	1600	200	2"



# **Membrane Engineering**

**301 Dodke Residency,**

**Warje Sports Club,**

**Warje, Pune 411052**

**+91 7774006195**

**Mail# [sales@ultrafluxindia.com](mailto:sales@ultrafluxindia.com)**

**[www.ultrafluxindia.com](http://www.ultrafluxindia.com)**